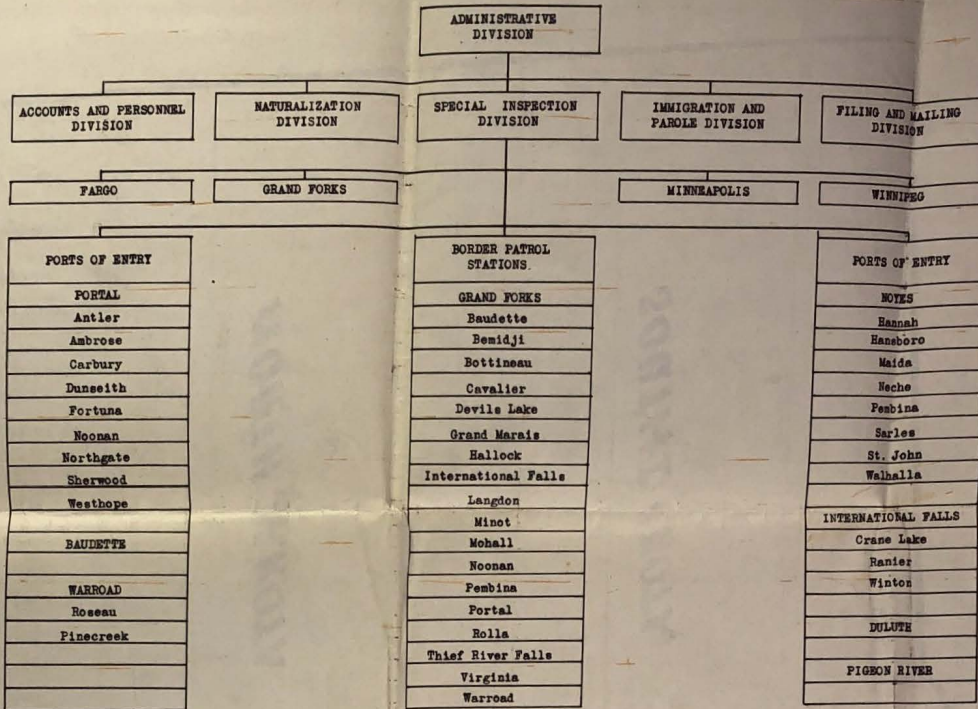


# ORGANIZATIONAL CHART

DISTRICT NO. 13 - ST. PAUL, MINNESOTA  
 DISTRICT OFFICE DIVISIONS - INTERIOR OFFICES - PORTS OF ENTRY - BORDER PATROL STATIONS



DISTRICT NUMBER 13 DIVISIONS OF THE DISTRICT OFFICE, INTERIOR OFFICES, AND PORTS OF ENTRY	AUTHORIZED STRENGTH											DISTRICT NUMBER 13 BORDER PATROL DISTRICT HEADQUARTERS AND STATIONS	CHIEF PATROL INSPECTOR	ASSISTANT CHIEF PATROL INSPECTOR	SENIOR PATROL INSPECTOR	PATROL INSPECTOR	MOTOR MECHANIC	CLERK		
	DISTRICT DIRECTOR	ASSISTANT DISTRICT DIRECTOR	DISTRICT LAW OFFICER	ASSISTANT DIVISIONAL DIRECTOR	INSPECTOR IN CHARGE	ASSISTANT INSPECTOR IN CHARGE	INSPECTOR	CHIEF AND SENIOR NATURALIZATION EXAMINER	NATURALIZATION EXAMINER	SUPERVISOR, SPECIAL INSPECTION	SPECIAL INSPECTOR								GUARD	CLERK
ADMINISTRATIVE DIV.	1	1	1			1							7	GRAND FORKS	1	1	1	4	2	1
SPECIAL INSPECTION DIV.						2			1	2			2	Baudette			1	3		
IMM. & PAROLE DIVISION						1				1			1	Bemidji			1	3		
NATURALIZATION DIV.					1	1/1	4						5	Bottineau			1	4		
FILING & MAILING DIV.													3	Cavalier			1	3		
ACCTS. & PERSONNEL DIV.													3	Devils Lake			1	3		
FARGO														Grand Marais			1	4		
GRAND FORKS														Hallock			1	3		
MINNEAPOLIS													1	International Falls			1	6		
WINNIPEG					1	3							1	Langdon			1	3		
BAUDETTE					1	2								Minot			1	4		
DULUTH			1		2		1		1	1	4			Mohall			1	3		
INTERNATIONAL FALLS					1	9							1	Noonan			1	4		
Crane Lake						1								Pembina			1	6		
Ranier						2								Portal			1	5		
Winton						1								Rolla			1	3		
NOTES					1	1	13						2	Thief River Falls			1	3		
Hannah						1								Virginia			1	4		
Hansboro						2								Warroad			1	3		
Maida						1														
Neché						2														
Pembina						4														
Sarles						1														
St. John						1														
Walhalla						1														
PIGEON RIVER					1	3														
PORTAL					1	8						1								
Ambrose						1														
Antler						1														
Carbury						1														
Dunseith						2														
Fortuna						1														
Noonan						1														
Northgate						2														
Sherwood						1														
Westhope						1														
WARROAD					1	3														
Roseau						1														
Pinecreek						1														
TOTALS	1	1	1	1	7	1	82	2	5	1	4	1	31	TOTALS	1	1	19	71	2	1





DOMINION OF CANADA



**DISTRICT 13**  
**IMMIGRATION AND NATURALIZATION**  
**SERVICE**  
**ST. PAUL, MINNESOTA**

- INTERIOR STATION
- PORT OF ENTRY
- △ BORDER PATROL
- ▲ ADMINISTRATIVE AND BORDER PATROL
- ⊙ DISTRICT BORDER PATROL HEADQUARTERS
- DISTRICT OFFICE
- ✱ ALIEN DETENTION CENTER