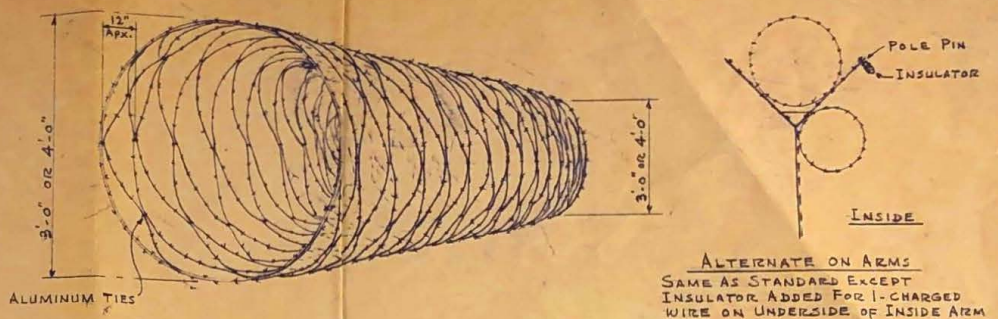
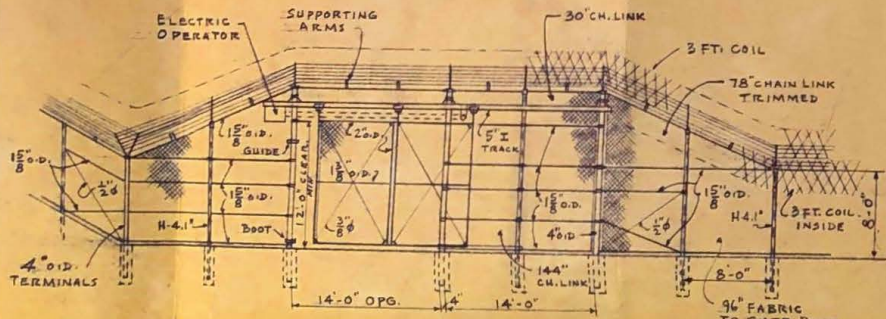


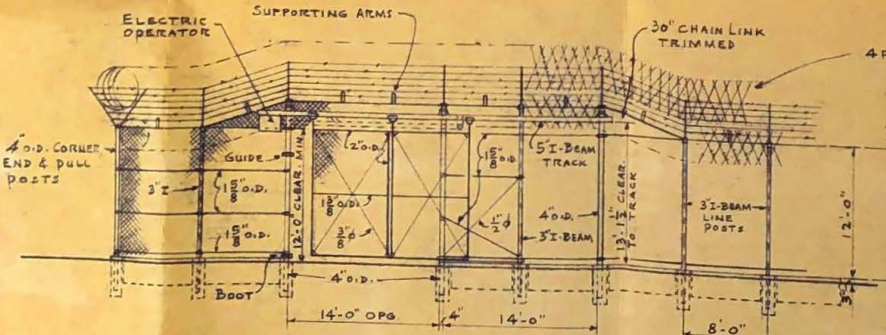
TYPICAL PART PLAN



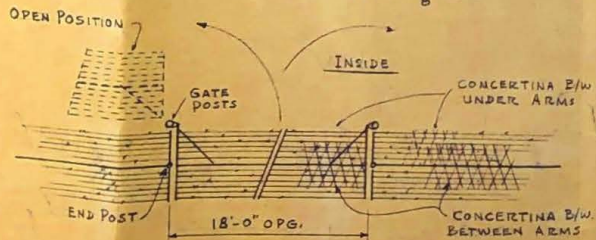
**PERSPECTIVE OF CONCERTINA BARBED WIRE COIL**  
 COILS SHALL BE TRUE CONCERTINA TYPE COILS HAVING AN OPEN SPACE ACROSS DIAMONDS NO GREATER THAN 12" APPROX. WHEN STRETCHED. ALL BARBED WIRE USED IN COILS TO BE 4-POINT TYPE WITH BARS 4" ON  $\pm$  GALV. AFTER. 2-LINE WIRES #12 1/2 GA. - BARS #14 GA.



ELEVATION AT SLIDE GATE IN 8 FT. FABRIC HEIGHT FENCE  
 SCALE - 1/8" = 1'-0"



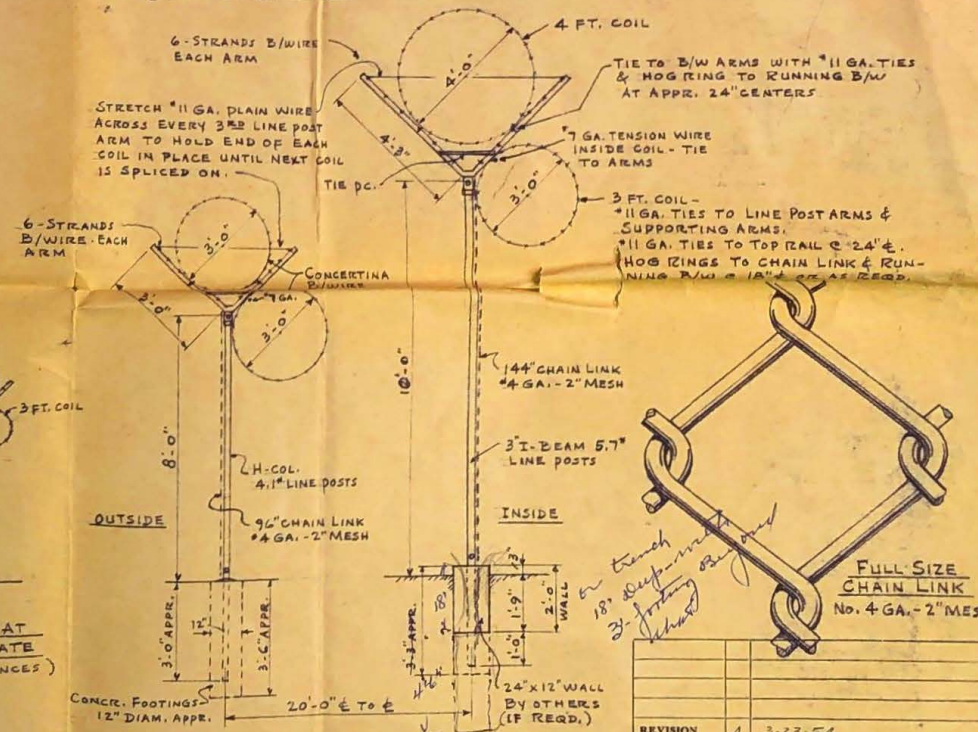
ELEVATION AT SLIDE GATE IN 12 FT. FABRIC HEIGHT FENCE  
 SCALE - 1/8" = 1'-0"



TYPICAL PLAN OF RAILROAD GATE  
 (CAN BE MADE TO SWING IN OR OUT)

**FENCE SPECS:**

- No. 4 GA. - 2" MESH CHAIN LINK FABRIC GALV. TO WITHSTAND 12- ONE MINUTE IMMERSIONS UNDER THE PREECE TEST; ONE EDGE KNUCKLED; ONE EDGE TWISTED & BARBED FINISH,
  - 1 5/8" O.D. TOP, BOTTOM & BRACE RAILS (2.27")
  - H-COL. LINE POSTS (4.11") FOR 8 FT. FABRIC HEIGHT FENCE - APPROX. 8'-0" CENTERS
  - 3" I-BEAM, " " (5.7") " 12 FT.
  - 4" O.D. END, CORNER & PULL POSTS (9.11")
  - 4" O.D. GATE POSTS (9.11")
  - 2" O.D. GATE FRAMES (2.72")
- FENCE BARBED WIRE GALV. AFTER - SPECS. SAME AS CONCERTINA B/W  
 SEE ABOVE FOR CONCERTINA BARBED WIRE SPECS.



SECTION THRU BOTH FENCES  
 SCALE - 3/8" = 1'-0"

FULL SIZE CHAIN LINK  
 No. 4 GA. - 2" MESH

REVISION	DATE
A	3-23-54

**CYCLONE FENCE DIV.**  
 (DIVISION OF AMERICAN STEEL & WIRE COMPANY)  
 WAUKEGAN, ILLINOIS  
*D.W. Hasel - Dr. 4. 709*  
**MAXIMUM SECURITY FENCE**

DR. J.C.	APPROVED
SCALE - AS NOTED	DATE 1-11-54
ORDER NO.	DRAWING NO.
<b>WDX-363</b>	